



GEOJIT

PEOPLE YOU PROSPER WITH

AGRI PICKS

A Daily Report on Agricultural Commodities

Thursday, April 15, 2021

TODAY'S PICKS

AGRI BUZZ

- Belief that mustard oil is an immunity booster has led millers to intensify crushing of the oilseed. This, in turn, has led to a surge in price of mustard, which is now seen rising to a record high of 7,000 rupees per 100 kg in about a month, market participants said.
- The Food Corp of India is likely to raise 80 bln rupees through government-guaranteed bonds in the current financial year started April, an official from the procurement agency said.
- Castor seed production in the country is expected to fall to 1.78 mln tn in 2020-21 (Jul-Jun) from the previous estimate of 1.90 mln tn, according to the third survey commissioned by The Solvent Extractors' Association of India.
- The Organization of the Petroleum Exporting Countries has scaled up its outlook for global oil demand growth in 2021 from its previous estimate, as bulk of the consumption growth is expected to take place in the second half of the year.
- India is likely to receive "normal" rains during the four-month-long southwest monsoon season this calendar year, private weather forecaster Skymet Weather Services Pvt Ltd said.
- The Organization of the Petroleum Exporting Countries has scaled up its outlook for global oil demand growth in 2021 from its previous estimate, as bulk of the consumption growth is expected to take place in the second half of the year.
- Several fertiliser manufacturers have agreed to sell diammonium phosphate and nitrogen, phosphorus, and potassium fertilisers at unrevised rates till available stocks are exhausted, Sadananda Gowda, Union Chemical and Fertiliser minister, said.
- Global natural rubber production in March is likely to have risen 1.3% on year to 910,000 tn, the Association of Natural Rubber Producing Countries said.

	Futures	Spot
Contract/spot	JEERA - APR21	Unjha
Rate	13985	14054.55
% chg	-0.21	-0.16
1 week low	13905	14019.05
1 week High	14390	14208.35
	Futures	Spot
Contract/spot	CHANA - APR21	Bikaner
Rate	5516	5521
% chg	-0.72	-0.41
1 week low	5364	5406.75
1 week High	5605	5543.75
	Futures	Spot
Contract/spot	SOYABEAN - APR21	Indore
Rate	6922	7070
% chg	-0.75	0
1 week low	6407	6720
1 week High	7354	7070
	Futures	Spot
Contract/spot	CASTOR SEED - APR21	Deesa
Rate	4848	4907
% chg	2.06	0.57
1 week low	4726	4879.4
1 week High	4888	4940
	Futures	Spot
Contract/spot	RUBBER - APR21	Kottayam
Rate	17027	16800
% chg	0	-1.5
1 week low	16800	0
1 week High	16800	0

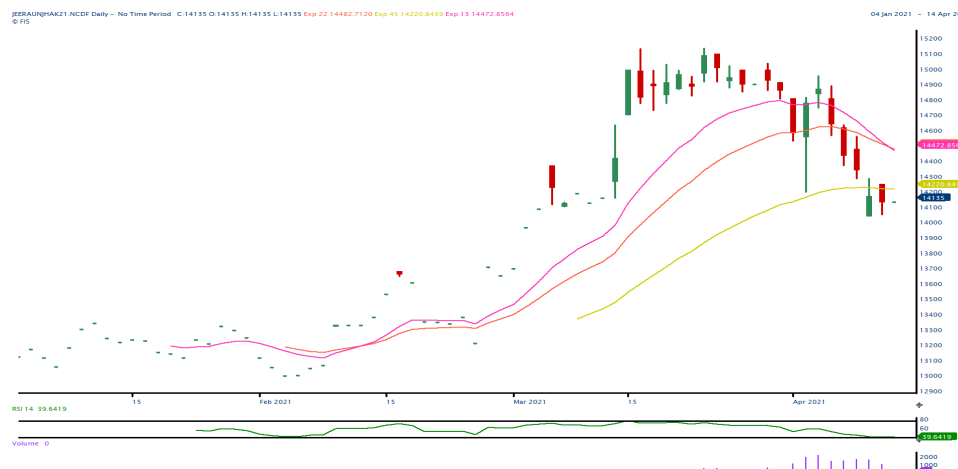
	Futures	Spot
Contract/spot	TURMERIC - APR21	Nizamabad
Rate	7758	7752.8
% chg	-4.79	0.95
1 week low	7660	7752.8
1 week High	8198	7752.8
	Futures	Spot
Contract/spot	GUAR SEED10 - APR21	Jodhpur
Rate	3900	3969.45
% chg	0.59	0.23
1 week low	3847	3952.25
1 week High	3949	3977.5
	Futures	Spot
Contract/spot	REFINDED SOYA OIL - APR21	Kandla
Rate	1377	1349.45
% chg	1.64	0.35
1 week low	1298	1335.8
1 week High	1378	1349.45
	Futures	Spot
Contract/spot	KAPAS - APR21	Rajkot
Rate	1305	1318.95
% chg	0.5	-0.28
1 week low	1255	1318.95
1 week High	1359	1323.4
	Futures	Spot
Contract/spot	MAIZE - Feed/Industrial Grade	Gulabbagh
Rate	0	1500
% chg	0	0
1 week low	0	1450
1 week High	0	1500

	Futures	Spot
Contract/spot	CORIANDER - APR21	Kota
Rate	7054	7180
% chg	-1.86	-0.69
1 week low	7032	7167.85
1 week High	7350	7378.65
	Futures	Spot
Contract/spot	Guar Gum Refined Splits - APR21	Jodhpur
Rate	5943	6141.65
% chg	-0.15	0.12
1 week low	5920	6107.5
1 week High	6105	6180.85
	Futures	Spot
Contract/spot	RAPE MUSTARD SEEDS - APR21	Jaipur
Rate	6435	6544.45
% chg	-0.19	1.02
1 week low	6110	6282.25
1 week High	6488	6544.45
	Futures	Spot
Contract/spot	COTTON SEED OIL CAKE AKOLA - APR21	AKOLA
Rate	2649	2756.45
% chg	-2	0.23
1 week low	2593	2721.65
1 week High	2728	2768.95
	Futures	Spot
Contract/spot	BARLEY - APR21	Jaipur
Rate	1860	0
% chg	3.74	0
1 week low	1707	0
1 week High	1860	0

SPICES COMPLEX

Market Buzz

- Jeera May futures on NCDEX were held in narrow ranges on Tuesday on subdued demand.
- Traders at the Unjha Agricultural Produce Market Committee have decided to suspend operations for a week, from April 14 to 21, because of the resurgence in coronavirus cases.
- According to a survey conducted by the Federation of Indian Spice Stakeholders, jeera production in India is likely to be 478520 tons in 2020-21 (Oct-Sep), down by 11 per cent yoy.
- Government estimates 2020-21 jeera output at 887000 tons compared to 912000 tons a year ago.
- According to the second advance estimates released by the Gujarat’s farm department, production in jeera is expected to be at 373700 tonnes in 2020-21 compared to 375420 tonnes produced last year (2019-20).
- According to Gujarat’s farm department, as of 28 Dec2020, jeera has been sown across 464469 hectares in state, compared to 435657 hectares sown during the same period last year.
- Spices Board pegs Apr-Sep jeera exports at 153000 tonnes, up by 33 per cent on yoy basis.
- Coriander May futures on NCDEX fell more than one per cent on Tuesday. Lack of cues from the spot market weighed on.
- Government sees 2020-21 coriander output at 720000 tons compared to 701000 tons a year ago.
- Coriander production in Gujarat is expected to rise 55 per cent to 216680 tonnes in 2020-21 season (Jul-Jun) due to sharp rise in acreage according to the state’s farm department’s second advance estimates.
- As of Dec 28, 2020 coriander has been sown across 135563 hectares compared to 76904 hectares sown during the same period last year showed the data from the Gujarat state farm department.
- According to Spices Board of India data, coriander exports for the Apr-Sep period this year is seen at 26750 tonnes, up by nine per cent on yoy basis.
- Turmeric May futures on NCDEX stretched losses on Tuesday and ended more than four per cent down.
- Government sees 2020-21 turmeric output at 1.11 million tonnes compared to 1.15 million tons a year ago.
- Government pegs 2020-21 cardamom output at 25000 tons compared to 21000 tons a year ago.



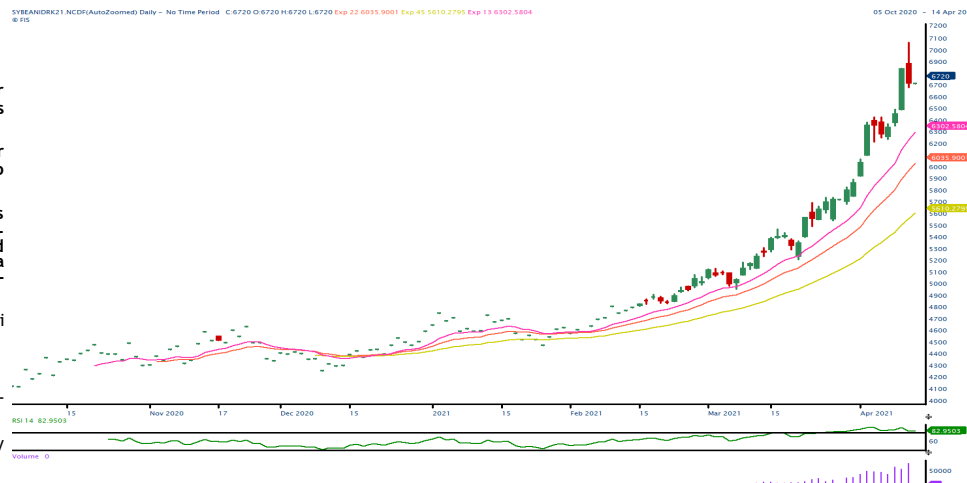
TECHNICAL VIEW

<p>JEERA NCDEX MAY</p>	<p>Even as there prevails weakness, now rise above 14270 or a fall past 13950 may lend fresh directions.</p>	
<p>DHANIYA NCDEX MAY</p>	<p>Choppy to weak trades expected as long as 7350 caps upside. A voluminous rise above 7350 may call for 7430/7550.</p>	
<p>TURMERIC NCDEX MAY</p>	<p>Weakness may continue and higher level selling likely as long as 8350 caps.</p>	
<p>CARDAMOM MCX MAY</p>	<p>Choppy trades expected.</p>	






OILSEED COMPLEX

Market Buzz

- All commodities, except Rmseed in the oilseed basket rose yesterday. MCX Apr CPO prices traded higher tracking gains in BMD Malaysian palm oil prices on reports higher exports in Malaysia. May Soy oil prices traded higher tracking gains in U.S CBOT soybean oil prices.
- NCDEX May soybean prices extended to trade higher and hit all time high on back of strong demand for soymeal from exporters along with dwindling supplies. May NCDEX Mustard seed prices traded lower due to higher supply in the spot market.
- India's soymeal exports jumped nearly fourfold on year to 220,000 tn in March. The Soybean Processors Association of India data showed. In the same month a year ago, exports were at 58,000 tn. Overseas shipments of the oil meal rose significantly due to strong demand from France, Germany, the Netherlands, and Qatar, traders said. During Oct-Mar, exports jumped to 1.59 mln tn from 423,000 tn a year ago, SOPA data showed. Demand for Indian soymeal, which is considered to be rich in protein and is non-genetically modified, is seen rising in the world markets, the traders said.
- Sri Lanka's decision to ban import of crude palm oil is unlikely to impact global prices, market experts said. Sri Lanka buys palm oil in small quantity and its decision to stop the import is unlikely to lead to a global glut.
- India's soymeal exports in March are expected to jump sixfold on year to nearly 200,000 tn, according to SEA.
- Crushing of mustard seeds rose 60% on year to 1.2 mln tn across the country in March, data from Marudhar Trading Agency showed. Mills had crushed 750,000 tn of the oilseed during the same period last year.
- India's 2020-21 (Jul-Jun) mustard output is seen rising to 22.6% on year to 8.95 mln tn, according to a joint survey by the Central Organisation for Oil Industry and Trade and the Mustard Oil Producers' Association.
- India's oilmeal exports surged threefold on year to 393,309 tn in February, as per data released by The Solvent Extractors' Association of India. For Apr-Feb, overall exports of oilmeal rose 49% on year to 3.36 mln tn.
- India's vegetable oil imports dropped nearly 25% on year to around 838,607 tn in February, The Solvent Extractors' Association of India said. During Nov-Feb, the country imported 4.39 mln tn of vegetable oil, down 3.7% from the year-ago period.
- The US Department of Agriculture has scaled up its estimate for global oilseed production in 2020-21 to 595.8 mln tn from 595.1 mln tn projected in February. The world oilseed crop is projected higher with rise in production of soybean and rapeseed, a kind of mustard. Soybean output in Brazil was raised by 1 mln tn to 134 mln. Soybean output is raised 200,000 tn to 10.7 mln in India based on updated government area data while Argentina's soybean crop is reduced 500,000 tn to 47.5 mln due to dry weather conditions over the past month. The agency said that a sharp rise in world oilseed production was limited by lower palm kernel, cottonseed, and sunflowerseed output. World oilseed exports are raised 800,000 tn to 194.7 mln tn primarily on higher rapeseed exports for Ukraine and Australia. World soybean crush is forecast up 1.6 mln tn to 323.6 mln as higher crush for Argentina and Brazil is partly offset by lower crush for China. Higher crush in Argentina results in higher meal and oil exports. Soybean crush for China is lowered by 1 mln tn to 98 mln tn. World soybean stocks are a tad higher, with increased stocks for China and Brazil that are mostly offset by lower stocks for Argentina, it said. The agency maintained its estimate for soybean output in the US at nearly 112.6 mln tn in 2020-21.
- India is likely to produce around 10 mln tn of mustard in 2020-21 (Jul-Jun), up 35% from a year ago, due to higher acreage and favourable weather conditions, according to the Solvent Extractors' Association of India.
- The government has proposed agriculture infrastructure and development cess on key edible oils in the Union Budget for 2021-22 (Apr-Mar). In the case of crude palm oil, the cess would lead to rise in overall effective duty by 5.5 percentage points to 35.75%. No major changes is seen in effective crude soyoil duty and crude sunflower oil.
- As on Dec 31, farmers, processors, stockists and state-run agencies had around 400,000 tn stock, compared with nearly 1.2 mln tn a year ago, according to Mustard Oil Producers Association of India.
- Farmers in the country have sown mustard across 6.9 mln ha, up 10.6% on year, in 2020-21 (Jul-Jun) season so far, data from the farm ministry.
- Indian government slashed import duty of crude palm oil. The government cut import duty on crude palm oil by 10% to 27.5%, in the last week, to cool off soaring edible oil prices in domestic markets.
- The area under major kharif crops so far in 2020-21 (Jul-Jun) was at 111.7 mln ha, up nearly 5% from a year ago, farm ministry data showed. The area under soybean across the country rose 6.4% on year to 12.12 mln ha as of 24th Sep, according to data from the farm ministry. The Union Cabinet approved a hike in minimum support price for 14 major kharif crops. MSP for soybean hiked by Rs.170 to 3880 from 3710 per 100 kg. Soybean output is estimated at 12.2 mln tn in 2019-20, according to the farm ministry's fourth advance estimate.
- India is likely to grow a record 10 mln tn mustard crop in 2020-21 (Jul-Jun), mainly due to the likelihood of a sharp rise in acreage, according to Solvent Extractors' Association of India. The government has targeted an all-time high crop of 12.5 mln tn for this rabi season. The government has fixed the minimum support price at 4,650 rupees per 100 kg for 2020-21 (Apr-Mar) marketing season against 4,425 rupees per 100 kg the previous year.
- According to the first advance estimates for 2020-21 (Jul-Jun), castor seed output is seen at 1.7 mln tn compared with 1.8 mln tn in the fourth advance estimates for 2019-20, according to the data released by the farm ministry. While, according to traders, crop is seen at 1.5-1.6 mln tn. Farmers have sown castor seed across 792,000 ha in 2020-21 (Jul-Jun), down 16% from a year ago.
- India's castor oil exports fell 5.2% on year to 43,516 tn in February, according to data from Solvent Extractors' Association of India. A year ago, exports were at 45,900 tn.
- Malaysia's crude palm oil output rose 28.4% on month to 1.4 mln tn in March, data from Malaysian Palm Oil Board showed. Total palm oil stocks in the country increased 10.7% on month to 1.4 mln tn. Exports of palm oil in March jumped up 31.8% on month to nearly 1.2 tn. Export of biodiesel fell over 50.9% on month to 13,839 tn.



TECHNICAL VIEW

<p>SOYBEAN NCDEX MAY</p>	<p>If prices slips below 6680 could see a major corrective moves targeting 6630/6600 levels.</p>	
<p>REF SOY OIL NCDEX MAY</p>	<p>As prices broke the support of 1322 could see more upside moves targeting 1360/1375 levels.</p>	
<p>RMSEED NCDEX MAY</p>	<p>Successful trades above 6400 could see bargain buying towards 6500/6525 levels.</p>	
<p>CASTOR NCDEX APR</p>	<p>If prices break the resistance of 4950 could see sharp rallies to 4975/5000 levels.</p>	
<p>CPO MCX APR</p>	<p>If prices break the resistance of 1162 could continue strong momentum towards 1170/1180 levels.</p>	





COTTON COMPLEX

Market Buzz

- The International Cotton Advisory Committee has scaled up its forecast for global prices in 2020-21 (Aug-Jul), as ending stocks for the ongoing season are estimated to be lower. The committee has revised upwards its price forecast for Cottook A index, a global benchmark for prices of raw cotton, by 3 cents from the previous month to 79 cents per pound. Lower stock levels provide additional support for prices which have increased over the course of the current season supported by falling production and rising consumption. Global ending stocks for the season are estimated at 20.9 mln tn, compared with 21.4 mln tn in the previous season. Global production for the ongoing season is estimated at 24.1 mln tn, down 8% from the previous season. The fall has largely been attributed to a smaller crop in the US, Brazil, and Pakistan. Production in India, is expected at 6.3 mln tn, compared with 6.2 mln tn in the previous year. In the US, cotton production is estimated at 3.2 mln tn, against 4.3 mln tn a year ago. The committee has estimated global consumption at 24.5 mln tn, compared with 22.8 mln tn last year as manufacturing activity continues to show signs of recovery. Global exports are seen higher at 9.5 mln tn, compared with 9.0 mln tn a year ago.
- The UK-based Cotton Outlook has marginally lowered its estimate for global output in 2020-21 (Aug-Jul) by 85,000 tn to 24 mln tn in its March report. The estimate has been scaled down largely because production is expected to be lower in India and the US. Output is seen higher at 6.3 mln tn in China. For the current season, the agency has lowered its crop estimate for India, the largest producer, to 6.1 mln tn from 6.2 mln tn projected a month ago. Production in the US is seen at 3.2 mln tn. Global cotton consumption in 2020-21 is seen at 24.9 mln tn, against the 24.5 mln tn projected in the previous month. Consumption is seen marginally higher on likely rise in demand from the Indian subcontinent, China and Turkey. As textile supply chains have recovered following the most acute phase of the COVID-related disruption, many spinners have enjoyed good profits and some have been adding new capacity. Ending stocks of the fibre for 2020-21 are seen at 814,000 tn, against 417,000 tn projected last month.
- The Cotton Association of India has marginally lowered its production estimate to 35.9 mln bales for the year from 36.0 mln bales in 2019-20. Of the total crop, around 29.9 mln bales have arrived in markets across India till February. The Cotton Association of India has raised its export estimate for the ongoing 2020-21 (Oct-Sep) season to 6.0 mln bales (1 bale = 170 kg) from 5.4 mln bales projected in the previous month. In the current marketing year till February, India has shipped around 3.6 mln bales. The association has scaled down its estimate for ending stocks to 10.6 mln bales, against 11.5 mln bales projected a month ago. Domestic consumption is maintained at 33.0 mln bales in 2020-21, while imports are now pegged at 1.2 mln bales compared to 1.4 mln bales a month ago.
- The US Department of Agriculture has scaled down India's cotton ending stock estimate for 2020-21 (Aug-Jul) to 17.4 mln bales (1 US bale = 218 kg) from 18.1 mln bales pegged in February. The downward revision in stocks is mainly due to higher export estimate for the country. On the export side, higher Indian exports account for most of the increase as auctions by the Cotton Corp of India have released much of the cotton purchased last year under the minimum support price. The agency, in its World Agricultural Supply and Demand Estimates report for March, revised its export estimates for India to 5.7 mln bales from 5.0 mln bales in the previous month. Production and domestic consumption estimate for India is maintained at 29.0 mln bales and 24.3 mln bales, respectively. USDA has scaled down its global cotton production estimate for 2020-21 to 113.3 mln bales due to smaller crop in Brazil and the US. The agency had pegged global production at 114.1 mln bales a month ago. Global cotton consumption is seen marginally higher at 117.5 mln bales. Exports are now seen at 44.5 mln bales, compared with 43.9 mln bales. Ending stocks are expected to be lower at 94.6 mln bales compared with 95.7 mln bales.
- In the Union Budget for 2021-22 (Apr-Mar), Finance Minister Nirmala Sitharaman proposed customs duty of 5% on cotton and 10% on cotton waste. She also proposed an Agriculture Infrastructure and Development Cess of 5% on cotton, taking the overall customs duty to 10%. Customs duty on raw silk and silk yarn or yarn spun from silk waste has been increased to 15% from 10% earlier.
- The area under major kharif crops so far in 2020-21 (Jul-Jun) was at 111.7 mln ha, up nearly 5% from a year ago, farm ministry data showed. Farmers have sown cotton across 13.04 mln ha in the 2020-21 (Jul-Jun) season, up by 2.1% from a year ago, as of 25th Sept., farm ministry.
- India's cotton output in the 2020-21 (Oct-Sep) marketing year is seen at 38.0 mln bales (1 bale = 170 kg), up 4% on year, according to traders' pegs 2020-21 cotton crop at 37.1 mln bales vs 35.5 mln bales.
- Govt cuts 2019-20 cotton output view to 35.5 mln bales vs 36.0 mln. The government has raised the support price of medium staple cotton by 260 rupees per 100 kg to 5,515 rupees, and that of long staple by 275 rupees to 5,825 rupees.



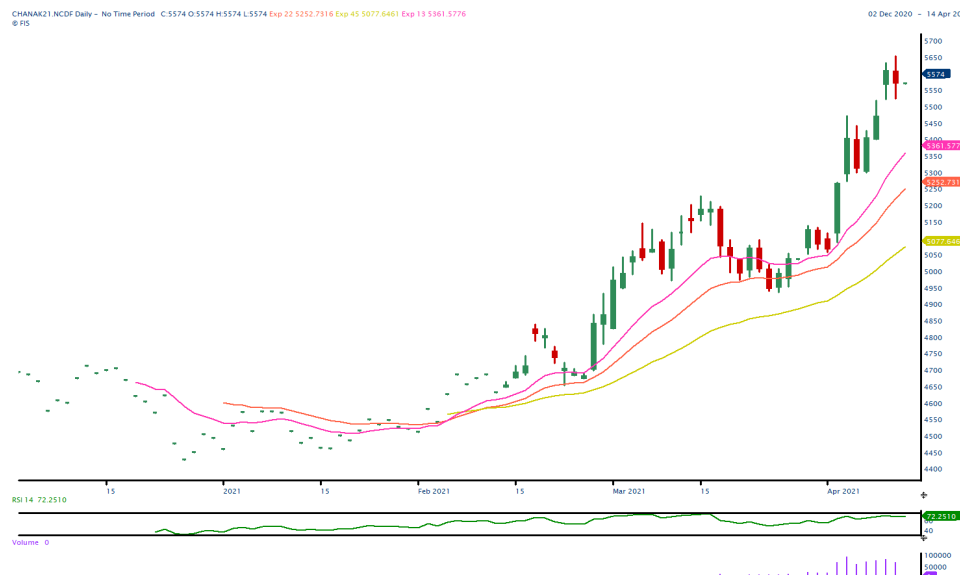
TECHNICAL VIEW

<p>AGRIDEX NCDEX</p>	<p>If prices sustain to trade above 1390 could continue upside moves targeting 1420/1435 levels.</p>	
<p>KAPAS NCDEX APR22</p>	<p>Choppy trading session for the day</p>	
<p>COTTON MCX APR</p>	<p>If prices slips below the trend line support of 21240 could see downside corrective moves targeting 21200/21000 levels.</p>	
<p>COCUDAKL NCDEX MAY</p>	<p>If prices unable to trade 2725 expect to see downside moves targeting 2650/2625 levels.</p>	

OTHERS

Market Buzz

- Chana May futures on NCDEX climbed to a 6-months high on Tuesday before retreating to end the session in red.
- Procurement of chana under the price support scheme has more than doubled 124130 tons in less than 10 days according to government officials.
- The government has procured 58819 tn of chana, harvested in 2020-21 (Jul-Jun), from farmers at the minimum support price as of March 22.
- Rajasthan government will start procurement of chana and mustard from farmers at the minimum support price from April 1. Around 614900 tons of chana and 1.2 million ton mustard will be procured from the farmers.
- The government has approved procurement of 14350 tons of chana Bihar during 2021-22 rabi marketing season.
- The farm ministry has approved the procurement of 61000 tonnes of chana from Maharashtra in 2021-21 under the price support scheme according to the NAFED.
- The farm ministry has approved the procurement of 51325 tonnes of chana from Telangana in 2021-21 under the price support scheme according to the NAFED.
- Farm Commissioner expects 2020-21 chana output to be at 11.5 million tonnes compared to 11.4 million tonnes a year ago.
- India's guar gum exports improved in the month of December 2020 by 32% to 17,644 tonnes compared to 13,414 tonnes during November 2020 at an average FoB of US \$ 1849 per tonne in the month of December compared to US \$ 1611 per tonne in the month of November 2020. However, the gum shipments were down -1% in December 2020 compared to the same period last year. Of the total exported quantity, around 4,914 tonnes is bought US, Russia (3,290 tonnes) and Germany (2,432 tonnes).
- India's guar split exports fell in the month of December 2020 by -39% to 2,800 tonnes compared to 4,557 tonnes during November 2020 at an average FoB of US \$ 955 per tonne in the month of December compared to US \$ 1,390 per tonne in the month of November 2020. Further, the guar split shipments were up +32% in December 2020 compared to the same period last year. Of the total exported quantity, around 1,880 tonnes is bought China, US (800 tonnes) and Switzerland (120 tonnes).
- Natural rubber in the Indian market stayed under pressure on Tuesday on rising Covid-19 cases, which could affect the demand. Weak cues from the overseas market weighed on as well.
- Based on the preliminary estimates, the outlook of world production of natural rubber (NR) is likely to fall 12.4%, year-on-year, to 897,000 tonnes in February 2021. While the world consumption of natural rubber is estimated to recover at 47.5%, year-on-year, to 1.103 million tonnes during the same month too.



TECHNICAL VIEW

CHANA NCDEX MAY	5670-5700 is immediate but relatively strong levels that has to be cleared for more upsides. Else, profit booking is likely.	
GUARSEED NCDEX MAY	Range bound move inside 3900-4000 expected.	
GUARGUM NCDEX MAY	May trade sideways to weak as long as 6250 caps up-side.	
RUBBER MCX APR	Pullbacks to 16700-16850 ranges may not be ruled out before resuming declining.	

TECHNICAL LEVELS

Commodity	Open*	High*	Low*	Close*	S3	S2	S1	Pivot	R1	R2	R3
SPICES											
Pepper May ICEX	409.4	409.4	409.4	409.4	409.4	409.4	409.4	409.4	409.4	409.4	409.4
Jeera May NCDEX	14250	14250	14055	14135	13925	13990	14120	14185	14315	14380	14510
Turmeric May NCDEX	8272	8400	7880	8018	7448	7664	7968	8184	8488	8704	9008
Cardamom May MCX	1450	1450	1450	1450	1450	1450	1450	1450	1450	1450	1450
Dhaniya May NCDEX	7250	7252	7122	7164	7034	7078	7164	7208	7294	7338	7424
Menthaoil Apr MCX	957.1	961.9	957	959.7	951	954	955	959	960	964	965
PULSES											
Chana May NCDEX	5609	5656	5527	5574	5410	5468	5539	5597	5668	5726	5797
Guarseed10 May NCDEX	3965	3985	3936	3966	3890	3913	3939	3962	3988	4011	4037
Guargum May NCDEX	6090	6140	6045	6064	5948	5997	6043	6092	6138	6187	6233
OIL & OIL SEEDS											
Soybean May NCDEX	6885	7068	6684	6720	6306	6495	6690	6879	7074	7263	7458
Ref. Soyoil May NCDEX	1311.1	1328.8	1299	1327	1267	1283	1297	1313	1327	1343	1357
RMseed May NCDEX	6525	6525	6391	6450	6302	6346	6436	6480	6570	6614	6704
CPO Apr MCX	1122	1144.5	1115.2	1141.6	951	1098	1110	1127	1139	1157	1169
Castor May NCDEX	4878	4936	4860	4922	4771	4815	4847	4891	4923	4967	4999
Cereals											
Wheat May NCDEX	1896	1896	1896	1896	1896	1896	1896	1896	1896	1896	1896
Barley May NCDEX	1838.5	1838.5	1838.5	1838.5	1839	1839	1839	1839	1839	1839	1839
Others											
Cocudakl May NCDEX	2716	2722	2661	2675	2616	2639	2677	2700	2738	2761	2799
Kapas22 Apr NCDEX	1230	1238	1219.5	1227.5	1202	1211	1220	1229	1239	1248	1257
Cotton Apr MCX	21340	21490	21200	21450	20907	21053	21197	21343	21487	21633	21777
Rubber May ICEX	17035	17039	16930	16930	16855	16892	16964	17001	17073	17110	17182

Pivot Point: A predictive indicator of the market which is calculated as an average of significant prices from the performance of a market in the prior trading period. An open above the pivot point is generally considered bullish and vice versa.
 S1, S2 & S3 are supports and R1, R2, and R3 are resistances from where a turnaround can be anticipated.
 *Open, High, Low and Close prices of previous trading day



Strong bias or bullish



Choppy or Sideways

Weak bias or bearish



Mild bullish bias

Mild bearish bias



TRADING SIGNALS

Commodities	Intraday	Overall	Volatility		Short term		Medium term		Long term	
	View	View	1 day	Annualized	3 day EMA	5 day EMA	13 day EMA	22 day EMA	45 day EMA	60 day EMA
Pepper May ICEX	FLAT/CHOPPY	POSITIVE	0.86%	13.6%	FLAT	FLAT	POSITIVE	POSITIVE	POSITIVE	POSITIVE
Jeera May NCDEX	NEGATIVE	NEGATIVE	1.20%	19.1%	FLAT	NEGATIVE	NEGATIVE	NEGATIVE	NEGATIVE	POSITIVE
Turmeric May NCDEX	NEGATIVE	NEGATIVE	2.48%	39.4%	FLAT	NEGATIVE	NEGATIVE	NEGATIVE	NEGATIVE	POSITIVE
Cardamom May MCX	FLAT/CHOPPY	FLAT/CHOPPY	0.00%	0.0%	FLAT	FLAT	FLAT	FLAT	FLAT	FLAT
Dhaniya May NCDEX	NEGATIVE	NEGATIVE	1.52%	24.2%	FLAT	NEGATIVE	NEGATIVE	NEGATIVE	POSITIVE	POSITIVE
Chana May NCDEX	POSITIVE	POSITIVE	1.37%	21.8%	FLAT	POSITIVE	POSITIVE	POSITIVE	POSITIVE	POSITIVE
Guarseed10 May NCDEX	POSITIVE	POSITIVE	1.26%	20.0%	FLAT	POSITIVE	POSITIVE	POSITIVE	POSITIVE	NEGATIVE
Guargum May NCDEX	NEGATIVE	NEGATIVE	1.37%	21.8%	FLAT	NEGATIVE	NEGATIVE	POSITIVE	NEGATIVE	NEGATIVE
Soybean May NCDEX	POSITIVE	POSITIVE	1.81%	28.8%	FLAT	POSITIVE	POSITIVE	POSITIVE	POSITIVE	POSITIVE
Ref. Soyoil May NCDEX	POSITIVE	HIGHLY POSITIVE	1.71%	27.2%	POSITIVE	POSITIVE	POSITIVE	POSITIVE	POSITIVE	POSITIVE
RMseed May NCDEX	POSITIVE	POSITIVE	1.75%	27.7%	FLAT	POSITIVE	POSITIVE	POSITIVE	POSITIVE	POSITIVE
CPO Apr MCX	POSITIVE	HIGHLY POSITIVE	1.65%	26.2%	POSITIVE	POSITIVE	POSITIVE	POSITIVE	POSITIVE	POSITIVE
Castor May NCDEX	POSITIVE	POSITIVE	1.17%	18.6%	FLAT	POSITIVE	POSITIVE	POSITIVE	POSITIVE	POSITIVE
Kapas22 Apr NCDEX	NEGATIVE	NEGATIVE	#N/A	#N/A	FLAT	NEGATIVE	#N/A	#N/A	#N/A	#N/A
Cotton Apr MCX	POSITIVE	POSITIVE	1.05%	16.7%	POSITIVE	POSITIVE	POSITIVE	POSITIVE	NEGATIVE	NEGATIVE
Cocudak1 May NCDEX	NEGATIVE	POSITIVE	1.52%	24.1%	FLAT	NEGATIVE	POSITIVE	POSITIVE	POSITIVE	POSITIVE
Wheat May NCDEX	POSITIVE	POSITIVE	0.84%	13.3%	FLAT	POSITIVE	POSITIVE	POSITIVE	POSITIVE	POSITIVE
Barley May NCDEX	POSITIVE	POSITIVE	1.28%	20.4%	FLAT	POSITIVE	POSITIVE	POSITIVE	POSITIVE	POSITIVE
Menthaoil Apr MCX	FLAT/CHOPPY	NEGATIVE	0.28%	4.4%	FLAT	FLAT	FLAT	POSITIVE	NEGATIVE	NEGATIVE
Rubber May ICEX	POSITIVE	POSITIVE	0.58%	9.1%	POSITIVE	POSITIVE	NEGATIVE	POSITIVE	POSITIVE	POSITIVE

Trading signals is prepared based on statistical analysis and is purely on technical indicators like exponential moving averages (EMAs), Relative strength Index (RSI) and stochastic, putting altogether provides an idea about intraday, short, medium and long term trend of the commodities. It also signals the risk of an investment in both agricultural and global commodities as well. Based on all listed indicators above, investors were able to fix a daily, near-term and long term trends. However, must be cautious especially for real-time intraday traders/jobbers.

Trading Strategy based on EMA

Trading strategies mentioned in the report is mainly based on 3, 5, 13, 22, 45 & 60 days exponential Moving Averages. 3 and 5 day EMA has taken for developing Intraday trading strategy, 13 days and 22 days EMA for Short term and Medium term, while 45,60 days EMA for Long term. Here, we use EMAs for POSITIVE and NEGATIVE signals. POSITIVE signal is formed when a short-term moving average (eg: 30 day) crosses from below a longer-term average (eg: 60 day), which is considered bullish. Likewise, NEGATIVE signal is formed when a short-term moving average (eg: 30 day) crosses from above a longer-term moving average (eg: 60 day), which is considered bearish.

Intraday and Overall view The section is consist of both Intraday and Overall view. The Intraday view is calculated by netting out of POSITIVES/NEGATIVES/FLAT signals formed in the short term trend. On the another part, Overall view is calculated by netting out number of POSITIVES/NEGATIVES/FLAT signals formed in the short, Medium and long term trend.

Volatility is a measure for dispersion of price of a financial instrument over a period of time by using Standard deviation and annualised actual volatility. Standard deviation is used to calculate one day volatility. Whereas, Annualized Actual Volatility (AAV) is measured as annualized standard deviation of the continuously compounded daily returns of the asset. Generally the thumb rule is that, higher the volatility higher the risk of the asset. See the table below the range risk ratings.

Annualised Volatility >	Risk %	Ratings	Risk %	Ratings	Risk %	Ratings	Risk %	Ratings	Risk %	Ratings
> 35%	> 35%	Very High risk	27 to 34%	High risk	20 to 26%	Moderate risk	11 to 19%	Low risk	1 to 10%	Very Low risk

GENERAL DISCLOSURES & DISCLAIMERS:

CERTIFICATION,

We, Vinod T P, Hareesh V and Anu V Pai, employee of Geojit Financial Services Limited (GFSL), author of this report, hereby certify that all the views expressed in this research report (report) reflect my/ our personal views about any or all of the subject issuer or securities/ commodities.

DISCLAIMER

This report has been prepared by GFSL and the report & its contents are the exclusive property of GFSL and the recipient cannot tamper with the report or its contents in any manner and the said report, shall in no case, be further distributed to any third party for commercial use, with or without consideration.

GFSL has taken steps to ensure that facts in this report are based on reliable information but cannot testify, nor make any representation or warranty, express or implied, to the accuracy, contents or data contained within this report. It is hereby confirmed that wherever GFSL has employed a rating system in this report, the rating system has been clearly defined including the time horizon and benchmarks on which the rating is based.

Descriptions of any Commodity or Commodities mentioned herein are not intended to be complete and this report is not, and should not be construed as an offer or solicitation of an offer, to buy or sell any commodity or other financial instruments. GFSL has not taken any steps to ensure that the commodity/(ies) referred to in this report are suitable for any particular investor. This Report is not to be relied upon in substitution for the exercise of independent judgment. Opinions or estimates expressed are current opinions as of the original publication date appearing on this Report and the information, including the opinions and estimates contained herein, are subject to change without notice. GFSL is under no duty to update this report from time to time.

RISK DISCLOSURE

Geojit Financial Services Limited and/or its Affiliates and its officers, directors and employees including the analyst/authors shall not be in any way be responsible for any loss or damage that may arise to any person from any inadvertent error in the information contained in this report. Investors may lose his/her entire investment under certain market conditions so before acting on any advice or recommendation in these material, investors should consider whether it is suitable for their particular circumstances and, if necessary, seek professional advice. This report does not take into account the specific investment objectives, financial situation/circumstances and the particular needs of any specific person who may receive this document. The user assumes the entire risk of any use made of this information. Each recipient of this report should make such investigation as it deems necessary to arrive at an independent evaluation of an investment in the Commodity/(ies) referred to in this report (including the merits and risks involved). The price, volume and income of the investments referred to in this report may fluctuate and investors may realize losses that may exceed their original capital.

The investments or services contained or referred to in this report may not be suitable for all equally and it is recommended that an independent investment advisor be consulted. In addition, nothing in this report constitutes investment, legal, accounting or tax advice or a representation that any investment or strategy is suitable or appropriate to individual circumstances or otherwise constitutes a personal recommendation of GFSL.

REGULATORY DISCLOSURES:

Geojit Financial Services Limited's Associates consists of companies such as Geojit Technologies Private Limited (GTPL- Software Solutions provider), Geojit Credits Private Limited (GCPL- NBFC Services provider), Geojit Investment Services Limited (GISL- Corporate Agent for Insurance products), Geojit Financial Management Services Private Limited (GFMSL) & Geojit Financial Distribution Private Limited (GFDPL), (Distributors of Insurance and MF Units). In the context of the SEBI Regulations on Research Analysts (2014), Geojit Financial Services Limited affirms that we are a SEBI registered Research Entity and we issue research reports /research analysis etc that are prepared by our Research Analysts. We also affirm and undertake that no disciplinary action has been taken against us or our Analysts in connection with our business activities.

In compliance with the above mentioned SEBI Regulations, the following additional disclosures are also provided which may be considered by the reader before making an investment decision:

1. Disclosures regarding Ownership:

GFSL confirms that:

It/its associates have no financial interest or any other material conflict in relation to the subject Commodity futures covered herein at the time of publication of this report.

Further, the Research Analyst confirms that:

He, his associates and his relatives have no financial interest in the subject Commodity futures covered herein, and they have no other material conflict in the subject Commodity at the time of publication of this report.

2. Disclosures regarding Compensation:

During the past 12 months, GFSL or its Associates have not received any compensation or other benefits from any entity/ third party in connection with the Commodity futures mentioned in this report.

3. Disclosure regarding the Research Analyst's connection with the Commodity futures:

It is affirmed that we, Vinod T P, Hareesh V and Anu V Pai, employed as Research Analysts by GFSL and engaged in the preparation of this report have no substantial ownership or financial interest over any Commodity futures mentioned in the report.

4. Disclosure regarding Market Making activity:

Neither GFSL nor its Research Analysts have engaged in market making activities for the subject Commodity futures.

Copyright in this report vests exclusively with GFSL

Geojit Financial Services Ltd., 34/659-P, Civil Line Road, Padivattom, Kochi - 682024
Toll-Free Number: 1800-425-5501 / 1800-103-5501, Paid Number: 91 - 484 - 2901000
Research Entity SEBI Registration Number: INH200000345
Email id: customercare@geojit.com, Web: www.geojit.com

SEBI Stock Broker Registration No INZ000104737, Research Entity SEBI Reg No: INH200000345, Investment Adviser SEBI Reg No: INA200002817, Portfolio Manager: INP000003203, SEBI Registration No. Stock Broker: INZ000104737 / Depository Participant: IN-DP-325-2017, ARN Regn.Nos:0098, IRDA Corporate Agent (Composite) No.: CA0226.